



# ST100 STACKER

The McCloskey® ST100 Wheeled Stacker is designed for high capacity stockpiling operations. The unit comes standard with diesel power units, hydraulic main lift and hydraulic top fold. Electric and dual power are both available as options based on the best application for the customer's business.

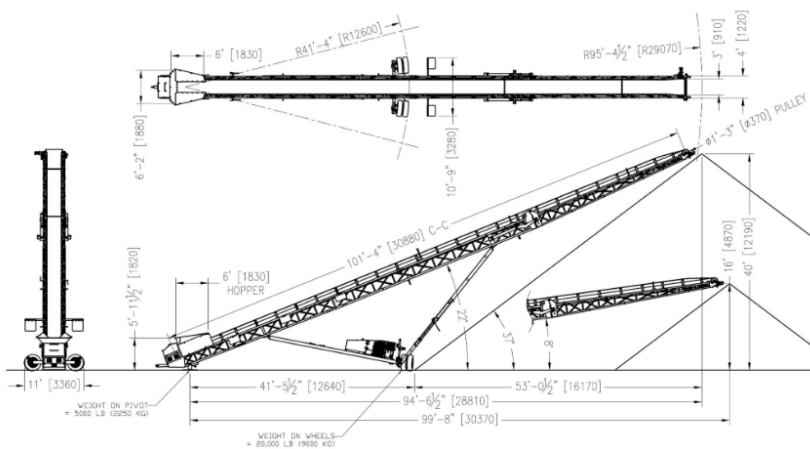
## FEATURES

- ✓ 900mm (36") wide heavy duty 100' long conveyor
- ✓ 55kW (74Hp) Tier 4 engine
- ✓ Row towable
- ✓ Large feed hopper
- ✓ Hydraulic folding frame for easy transport
- ✓ Fast on-site setup time (5 minutes)
- ✓ Abundant service room inside the power-pack
- ✓ Air brakes, mud flaps, lights



The ST100 is also available as a radio controlled track mounted unit. This heavy duty mobile stacker has a setback axle and 22.5 degree max conveyor angle allowing for the highest stockpiles per conveyor length in the industry.

With its durable truss frame, large feed hopper and base production capacity of 500 TPH with optional upgrades to 800 TPH, the McCloskey ST100 Stacker stands up well above the competition.



## ST100 TECH SPECS

<b>Engine</b>	55kW (74 Hp)
<b>Belt Length</b>	30.48m (100')
<b>Belt Width</b>	900mm (36")
<b>Stockpile Height</b>	12.2m (40')
<b>Stockpile Capacity</b>	3350m <sup>3</sup> (4375 yd <sup>3</sup> )
<b>Production</b>	500 TPH (standard) 800 TPH (optional)

## TRANSPORT

<b>Transport Length</b>	22.41m (73' 6.5")
<b>Transport Height</b>	4.12m (13' 6")
<b>Transport Width</b>	3.33m (10' 11")

## OPTIONS

Belt Scale | Spray Bar | Chevron Belt  
| ASGCO Scraper | Under Hopper  
Impact Idlers | Magnet Material  
Separator | Paddle Wheel | V-Bin |  
Hopper Extensions | Auxiliary Guarding